

ONLY HIGH SIERRA SHOWERHEADS® HAVE THE EXCLUSIVE NOZZLE TECHNOLOGY THAT CAN PRODUCE THE IDEAL SPRAY FOR SHOWERING FROM A 1.5 GPM STREAM OF WATER. SAVE WATER; SAVE ENERGY. NO MAINTENANCE; NO SACRIFICE.



Testimonial From an Online Purchaser, April 21, 2011:

"I've waited a month to write this review. This shower head is great! I rent out 3 rooms in my house and we were using about \$80 of natural gas to heat our water a month. Basically the showers were on continuously from 6am-8am every day. Our bill decreased to \$39!! Our water bill decreased too by \$10. So, in two months the two shower heads will have paid for themselves.

I've had no complaints from my tenants, and trust me, they would let me know if they were disappointed. This is a great buy, I don't understand why this isn't more popular.

Pros

- + Excellent water usage
- + Feels like a 'normal' shower
- + Works even with our poor water pressure (I'm not sure quantitatively what the actual flow is, but it feels poor to other places I've lived)
- + Has saved a LOT with water heating
- + Easy install

Cons

- None that I can discern

Testimonial from a Montana Motel Owner:

"I own a 45 room motel in Montana that caters to the engineers and conductors of the Burlington Northern Sante Fe Railroad... Although my hot water expenses have been rising steadily over the past years, I have resisted installing low flow shower heads for fear of offending my regular guests. But my hot water expenses finally reached a point where I had to try something. So I installed a few High Sierra FCS-200 shower heads in various rooms. I didn't say anything to anyone, but waited for reactions. To my surprise, the reactions were overwhelmingly positive; in fact I did not receive one negative comment. I am now in the process of installing High Sierra FCS-200 shower heads in every room.

I highly recommend them."

--Michael M.

Testimonial from Environmental Entrepreneurs:

"I tried out the shower head I purchased at the Water and Energy Technology Center last week. It exceeded my expectations. How can I buy four more of the FCS-200?"

--Bob Epstein

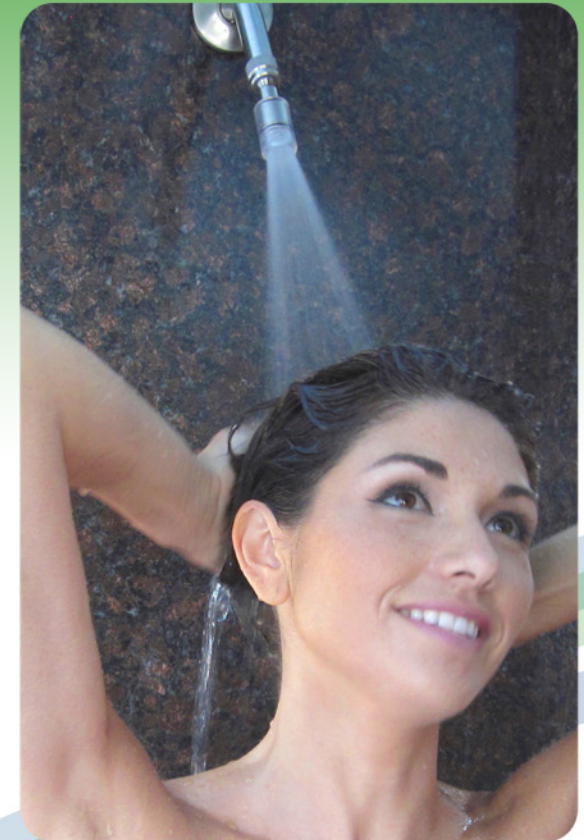
According to the Fresno Bee's Number One Columnist:

"Unlike other low-flow shower heads, it has a single outlet. But it delivers a wide spray, even with low water pressure, because of the patented nozzle design."

--Bill McEwen, The Fresno Bee



Conserving water at the source.



Not Just "Low Flow"...
High Sierra Showerheads® Are The Right Flow.



PO Box 732, Coarsegold, CA 93614

Tel: 888-445-1941 | Fax: 559-658-8496

www.highsierrashowerheads.com



Below are the High Sierra Showerhead® models recommended for home, apartments, hospitality and college dorms. Only these models have the option of our exclusive Opti-Spray™ ABS Sleeve which focuses the spray into a slightly narrower pattern. The Opti-Spray™ feature gives the shower head additional rinsing power for long hair and shaving legs. It is also recommended for showerheads located over tubs.

Below are the High Sierra Showerhead® models recommended for gyms, outdoor use, campgrounds, or any type of public showering installation.

The models shown are finished in chrome, but are also available in satin nickel



High Sierra Showerheads® are the world's only high efficiency shower heads to completely discard the decades-old ways of creating sprays for showers and to introduce a radically new idea, specifically designed for a minimal flow rate of only 1.5 gpm. Most other 2 gpm or less shower heads use nozzles and outdated techniques actually designed for much higher flows. Their engineers either reduce the flow by decreasing the size of the showerhead nozzles (resulting in a plugging and maintenance nightmare) or they reduce the total number of nozzles (resulting in a very unsatisfying shower spray).

The patented High Sierra Showerheads® Full Coverage Spray (FCS™) nozzle uses only one orifice to deliver a delightfully strong, wide, and full spray of big droplets that have just the right force for showering and rinsing long hair. There is no stinging, no misting, and no plugging. High Sierra Showerheads® are not just low flow... they are the right flow!



FCS-100-CHB (Aqua)



FCS-100-CHC (Clear)



FCS-100-CHG (Sea Green)



FCS-100-CHR (Coral)



FCS-100-CH (No Sleeve)
Polished Chrome



FCS-100-CHY (Jasmine)



FCS-100-CH-VRF

FCS-100-N-VRF

vandal resistant stainless steel set screws



All Residential and Recreational High Sierra Showerhead® Models feature:

- Patented and Maintenance Free FCS™ Nozzle (US Patent 7,185,130)
- 40% Less Water and Energy Than Traditional 2.5 GPM Shower Heads
- Return on Investment From Savings In As Few As 3 Months
- Strong, Wide, and Full Spray of Large Droplets. Superb Rinsing Capabilities Without Stinging or Misting.
- Minimal Heat Loss (no need to turn up the heat with these shower heads).
- Our Exclusive Accu-Flo™ Non-Clogging Pressure Regulator. Maintains a Flow of 1.5 GPM from 30 PSI to 90 PSI
- Solid Metal Construction (all parts with the exception of o-rings, washers, and the Splash Guard)
- Fully Drain After Each Use Inhibiting Bacterial Growth
- Satin Nickel or Chrome Finish
- MADE IN USA